



Hatherleigh Close

£650,000

Beautifully Presented Three-Bedroom Home in the Desirable Lidbury Square. Nestled in the highly sought-after Lidbury Square, this delightful three-bedroom home strikes the perfect balance between comfort and practicality. Upon entering, you are greeted by a spacious reception room, ideal for both relaxing and entertaining. The reception area flows seamlessly into a modern kitchen/dining room, offering plenty of space for meals and filled with natural light, creating a welcoming and airy atmosphere. The ground floor also includes a convenient downstairs WC and well-thought-out storage solutions.

Upstairs, the property features three generously sized bedrooms, each bathed in natural light, providing ample flexibility for family living or working from home. A well-appointed family bathroom completes the upper floor.

Additional highlights include a private rear garden, off-street parking, and exciting potential for extension (subject to planning permissions). Located within walking distance of Mill Hill East station, along with its excellent range of amenities and transport connections, this home offers both convenience and a comfortable living environment.

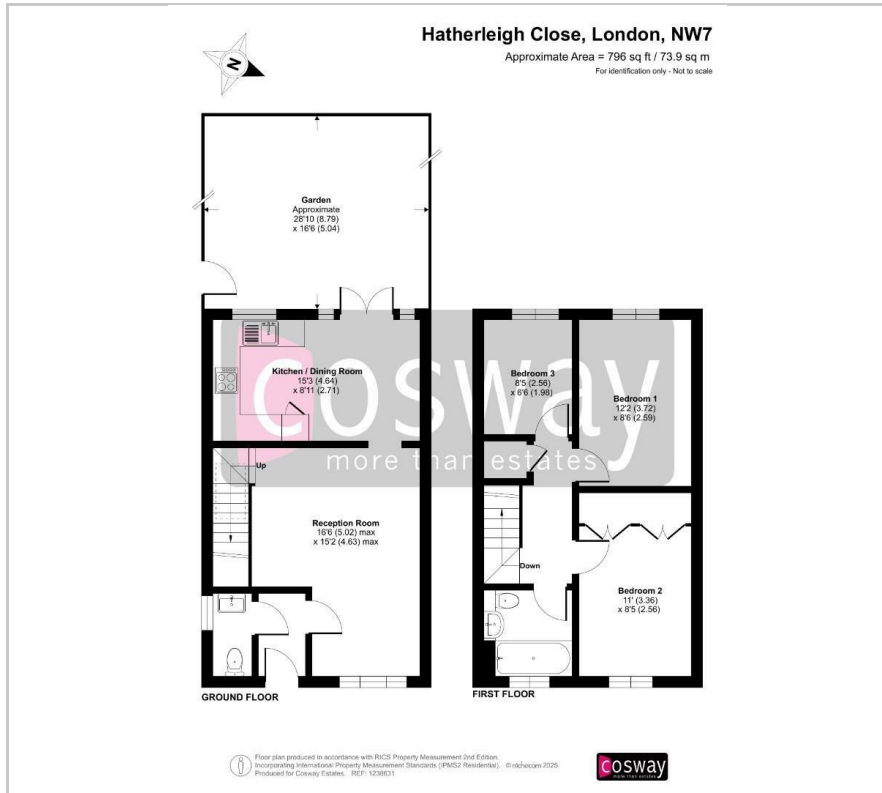
- 3 BEDROOM HOUSE
- LIDBURY SQUARE DEVELOPMENT
- OFF-STREET PARKING
- BRIGHT RECEPTION ROOM
- KITCHEN - DINING ROOM
- WALKING DISTANCE TO MILL HILL EAST STATION
- POTENTIAL TO EXTEND STPP

Viewing

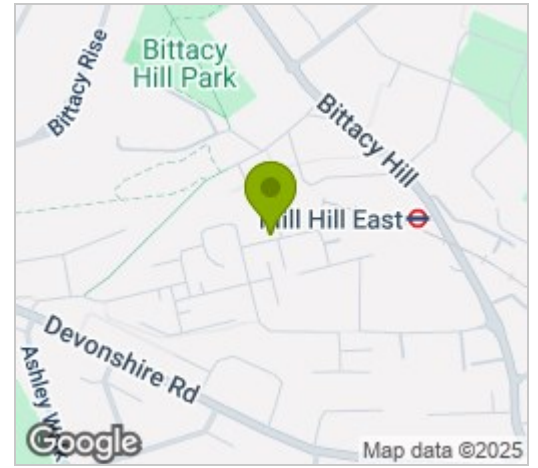
Please contact our Mill Hill Office on 02089590011 if you wish to arrange a viewing appointment for this property or require further information.



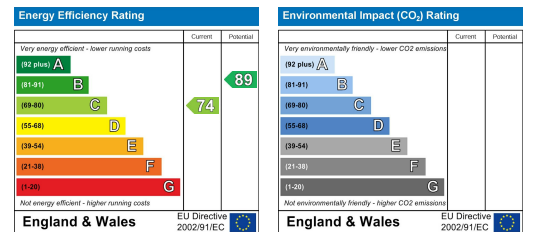
Floor Plan



Area Map



Energy Efficiency Graph



These particulars, whilst believed to be accurate are set out as a general outline only for guidance and do not constitute any part of an offer or contract. Intending purchasers should not rely on them as statements of representation of fact, but must satisfy themselves by inspection or otherwise as to their accuracy. No person in this firm's employment has the authority to make or give any representation or warranty in respect of the property.